

GIWW - SARASOTA COUNTY, FLORIDA CUTS S-1 THRU S-48 HYDROGRAPHIC EXAM SURVEY FY20 9-FOOT PROJECT

SURVEY NOTES

- REFER TO SURVEY NO. 20-111.
- SOUNDINGS ARE IN FEET AND TENTHS AND REFER TO NOAA'S REPORTED MEAN LOWER LOW WATER (MLLW) OF THE 1983-2001 TIDAL EPOCH.
- TIDAL REDUCTIONS WERE OBTAINED UTILIZING A REAL-TIME KINEMATIC (RTK) GPS AND REFERENCED TO MLLW UTILIZING A HYPACK KINEMATIC TIDE DATUM (KTD) MODEL. KTD FILE NAME IS: "SPC-FL-WEST-2010-12-07.KTD".
- ALL ELEVATIONS ARE BELOW THE CHART DATUM UNLESS PRECEDED BY A (+) SIGN.
- PLANE COORDINATES ARE BASED ON THE TRANSVERSE MERCATOR PROJECTION FOR THE WEST ZONE OF FLORIDA AND REFERENCED TO NORTH AMERICAN DATUM OF 1983 (NAD83).
- ALL STATIONING REFERS TO THE CENTERLINE OF THE CHANNEL.
- THIS SURVEY WAS PERFORMED USING REAL-TIME KINEMATIC (RTK) GPS POSITIONING WITH THE FOLLOWING REFERENCE BASE LOCATIONS:
 REFERENCE BASE LOCATED AT "GIWW 5 S" (PID: BFBF84)
 REFERENCE BASE LOCATED AT "C LISTOWSKI" (PID: BBDX69)
 REFERENCE BASE LOCATED AT "872 5899 A TIDAL" (PID: DL9718)
 REFERENCE BASE LOCATED AT "IWSA-96" (PID: BBD539)
 REFERENCE BASE LOCATED AT "GIWW 6 S" (PID: BFBF87)
- DEPTHS DEPICTED BY THIS SURVEY ARE REFERENCED TO MLLW, TIDAL EPOCH 1983-2001 AS REPORTED BY THE NATIONAL OCEANIC AND ATMOSPHERIC ADMINISTRATION (NOAA). A MODIFIED VERSION OF NOAA'S DATUM MODEL WAS USED TO CALIBRATE TO THE PUBLISHED MLLW HEIGHTS OF THE BELOW:
 NOAA TIDAL STATION 872 5809 FOR CUTS S-1 THRU S-6 (PID: AG7848)
 NOAA TIDAL STATION 872 5899 FOR CUTS S-7 THRU S-27 (PID: DL9718)
 NOAA TIDAL STATION 872 5943 FOR CUTS S-28 THRU S-34B (PID: AG7167)
 NOAA TIDAL STATION 872 6083 FOR CUTS S-35 THRU S-48 (PID: AG7713)
- VERTICAL MEASUREMENTS WERE MADE USING A R2 SONIC MULTI-BEAM AND SYSTEM OPERATING AT 240 KHZ. ALL SOUNDINGS SHOWN ARE IN HIGH FREQUENCY.

VESSEL	DATE OF SURVEY	CUT
SB-52	07 JUL 2020	S-11A THRU S-15A
SB-52	08 JUL 2020	S-7 THRU S-11
SB-52	09 JUL 2020	S-16 THRU S-27
SB-52	22 SEP 2020	S-28 THRU S-34B
SB-44	24 SEP 2020	S-1 THRU S-6
SB-52	28 SEP 2020	S-42 THRU S-48
SB-52	29 SEP 2020	S-35 THRU S-41

LEGEND

	MONUMENT
	LIGHTED BEACON
	GREEN DAY BEACON
	RED DAY BEACON
	RED LIGHTED BUOY
	GREEN LIGHTED BUOY
	CAN BUOY
	NUN BUOY
	TIDE STAFF
	PROJECT DEPTH

US Army Corps of Engineers
Jacksonville District
SAFETY ON THIS JOB DEPENDS ON YOU

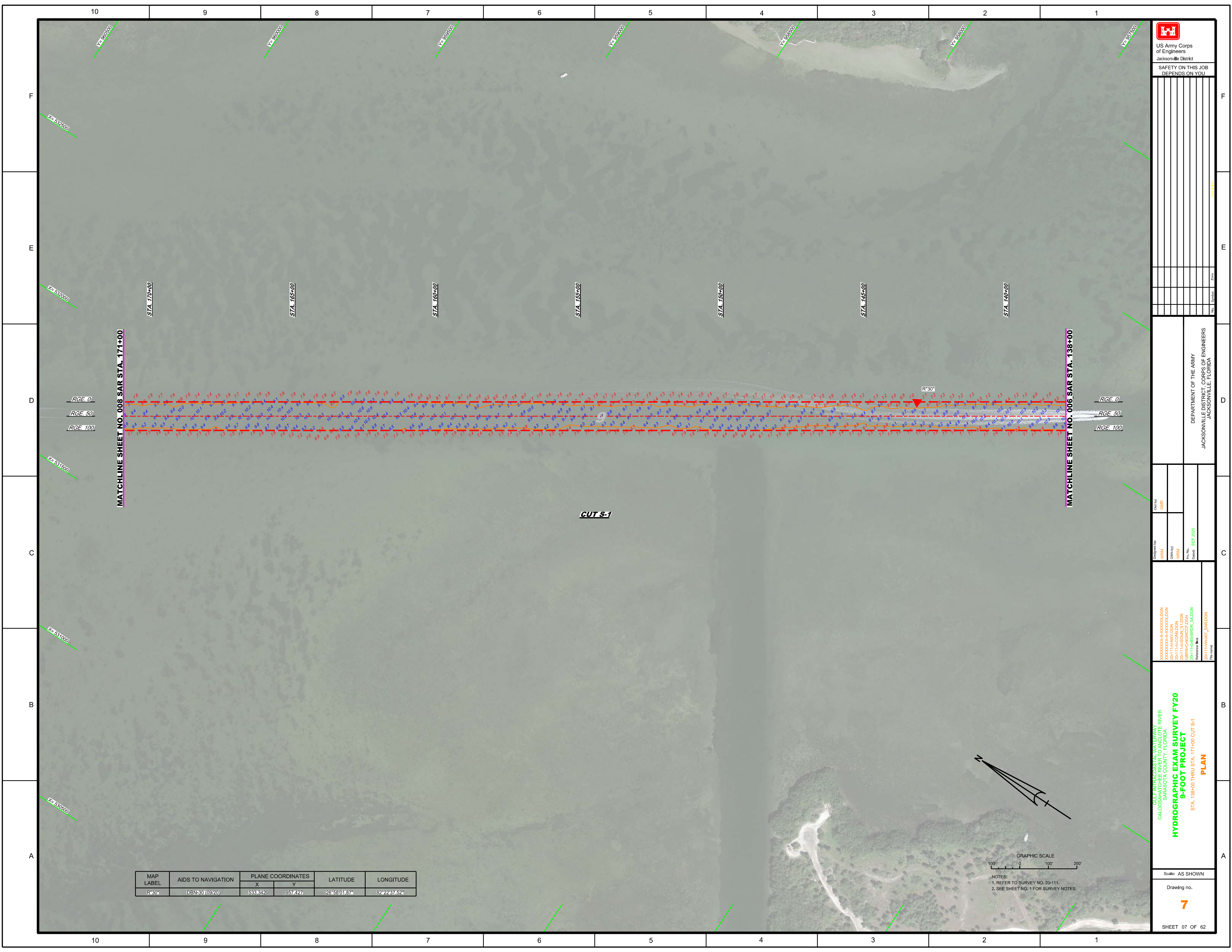
DEPARTMENT OF THE ARMY
JACKSONVILLE DISTRICT, CORPS OF ENGINEERS
JACKSONVILLE, FLORIDA

Designed by: WRM
Checked by: GHR
Drawn by: WRM
Scale: AS SHOWN

HYDROGRAPHIC EXAM SURVEY FY20
9-FOOT PROJECT
INDEX, LOCATION AND VICINITY MAP

Drawing no. 1

SHEET 01 OF 62



SAFETY ON THIS JOB DEPENDS ON YOU

Rev.	Symbol	Date	Description

DEPARTMENT OF THE ARMY
JACKSONVILLE DISTRICT, CORPS OF ENGINEERS
JACKSONVILLE, FLORIDA

Checked by: GHR
Designed by: WRM
Drawn by: WRM
File No.: 20-111-0077_SAR.DGN
Date: SEP 2020

XXXXXXXXXXXXXXXXXXXX.DGN
20-111-0077_SAR.DGN
20-111-0077_SAR.DGN
20-111-0077_SAR.DGN
20-111-0077_SAR.DGN
Reference files:
20-111-0077_SAR.DGN

GULF INTRACASTAL WATERWAY
CALOOCHEE RIVER
SARASOTA COUNTY, FLORIDA
HYDROGRAPHIC EXAM SURVEY FY20
9-FOOT PROJECT
STA. 138+00 THRU STA. 171+00 CUT S-1
PLAN

Scale: AS SHOWN

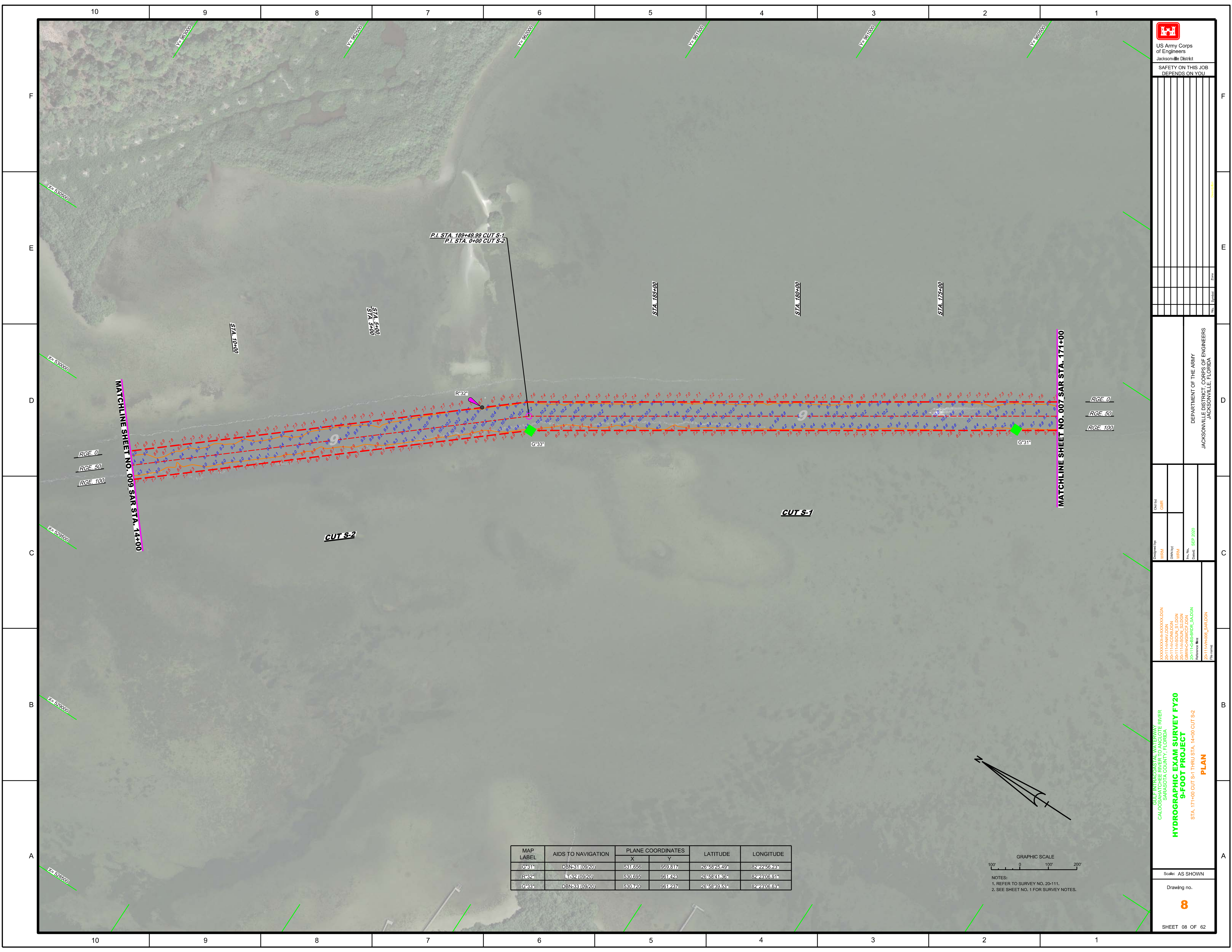
Drawing no.
7

SHEET 07 OF 62

MAP LABEL	AIDS TO NAVIGATION	PLANE COORDINATES		LATITUDE	LONGITUDE
		X	Y		
R*30*	DBN-30 (09/20)	533.342	957.427	26°58'01.87"	82°22'37.52"



NOTES:
1. REFER TO SURVEY NO. 20-111.
2. SEE SHEET NO. 1 FOR SURVEY NOTES.



P.I. STA. 189+49.99 CUT S-1
P.I. STA. 0+00 CUT S-2

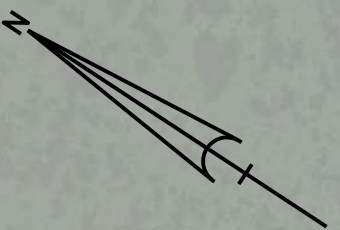
MATCHLINE SHEET NO. 009 SAR STA. 14+00

MATCHLINE SHEET NO. 007 SAR STA. 171+00


RGE 0
RGE 50
RGE 100

RGE 0
RGE 50
RGE 100

MAP LABEL	AIDS TO NAVIGATION	PLANE COORDINATES		LATITUDE	LONGITUDE
		X	Y		
G*31*	DBN-311 (09/20)	931.656	959.817	26°58'25.49"	82°22'56.23"
R*32*	LT-32 (09/20)	530.695	961.423	26°58'41.36"	82°23'06.91"
G*33*	DBN-331 (09/20)	530.720	951.237	26°58'39.59"	82°23'06.63"



NOTES:
1. REFER TO SURVEY NO. 20-111.
2. SEE SHEET NO. 1 FOR SURVEY NOTES.



US Army Corps of Engineers
Jacksonville District

SAFETY ON THIS JOB
DEPENDS ON YOU

DEPARTMENT OF THE ARMY JACKSONVILLE DISTRICT, CORPS OF ENGINEERS JACKSONVILLE, FLORIDA	Drawn by: GHR Checked by: WRM Date: SEP 2020
--	--

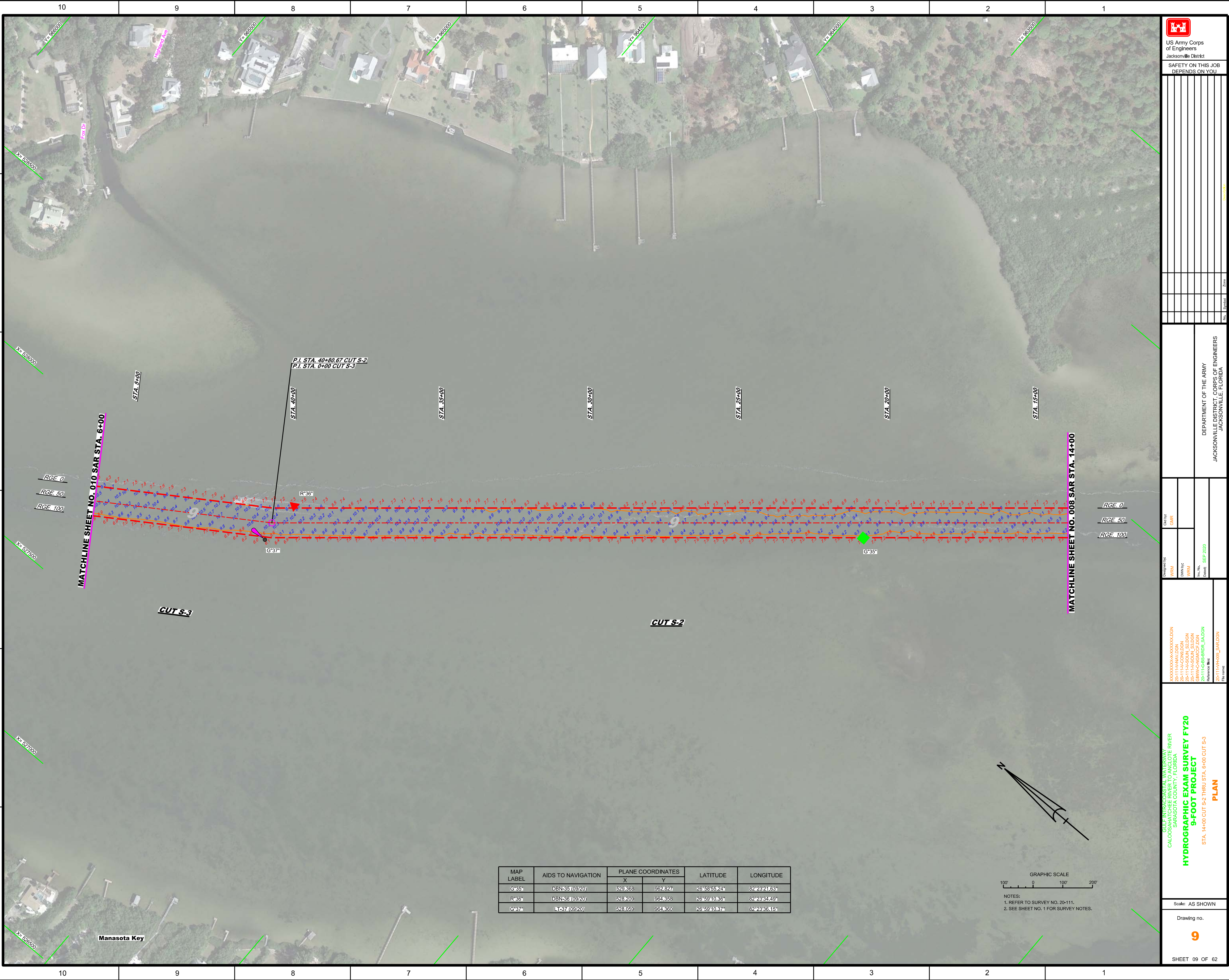
XXXXXXXXXXXXXXXXXXXX.DGN
 20-111-ACCON.DGN
 20-111-A-SOLA_ST.DGN
 20-111-C-31-001.DGN
 20-111-C-31-002.DGN
 20-111-C-31-003.DGN
 20-111-C-31-004.DGN
 20-111-C-31-005.DGN
 20-111-C-31-006.DGN
 20-111-C-31-007.DGN
 20-111-C-31-008.DGN
 20-111-C-31-009.DGN
 20-111-C-31-010.DGN
 20-111-C-31-011.DGN
 20-111-C-31-012.DGN
 20-111-C-31-013.DGN
 20-111-C-31-014.DGN
 20-111-C-31-015.DGN
 20-111-C-31-016.DGN
 20-111-C-31-017.DGN
 20-111-C-31-018.DGN
 20-111-C-31-019.DGN
 20-111-C-31-020.DGN
 20-111-C-31-021.DGN
 20-111-C-31-022.DGN
 20-111-C-31-023.DGN
 20-111-C-31-024.DGN
 20-111-C-31-025.DGN
 20-111-C-31-026.DGN
 20-111-C-31-027.DGN
 20-111-C-31-028.DGN
 20-111-C-31-029.DGN
 20-111-C-31-030.DGN
 20-111-C-31-031.DGN
 20-111-C-31-032.DGN
 20-111-C-31-033.DGN
 20-111-C-31-034.DGN
 20-111-C-31-035.DGN
 20-111-C-31-036.DGN
 20-111-C-31-037.DGN
 20-111-C-31-038.DGN
 20-111-C-31-039.DGN
 20-111-C-31-040.DGN
 20-111-C-31-041.DGN
 20-111-C-31-042.DGN
 20-111-C-31-043.DGN
 20-111-C-31-044.DGN
 20-111-C-31-045.DGN
 20-111-C-31-046.DGN
 20-111-C-31-047.DGN
 20-111-C-31-048.DGN
 20-111-C-31-049.DGN
 20-111-C-31-050.DGN
 20-111-C-31-051.DGN
 20-111-C-31-052.DGN
 20-111-C-31-053.DGN
 20-111-C-31-054.DGN
 20-111-C-31-055.DGN
 20-111-C-31-056.DGN
 20-111-C-31-057.DGN
 20-111-C-31-058.DGN
 20-111-C-31-059.DGN
 20-111-C-31-060.DGN
 20-111-C-31-061.DGN
 20-111-C-31-062.DGN
 20-111-C-31-063.DGN
 20-111-C-31-064.DGN
 20-111-C-31-065.DGN
 20-111-C-31-066.DGN
 20-111-C-31-067.DGN
 20-111-C-31-068.DGN
 20-111-C-31-069.DGN
 20-111-C-31-070.DGN
 20-111-C-31-071.DGN
 20-111-C-31-072.DGN
 20-111-C-31-073.DGN
 20-111-C-31-074.DGN
 20-111-C-31-075.DGN
 20-111-C-31-076.DGN
 20-111-C-31-077.DGN
 20-111-C-31-078.DGN
 20-111-C-31-079.DGN
 20-111-C-31-080.DGN
 20-111-C-31-081.DGN
 20-111-C-31-082.DGN
 20-111-C-31-083.DGN
 20-111-C-31-084.DGN
 20-111-C-31-085.DGN
 20-111-C-31-086.DGN
 20-111-C-31-087.DGN
 20-111-C-31-088.DGN
 20-111-C-31-089.DGN
 20-111-C-31-090.DGN
 20-111-C-31-091.DGN
 20-111-C-31-092.DGN
 20-111-C-31-093.DGN
 20-111-C-31-094.DGN
 20-111-C-31-095.DGN
 20-111-C-31-096.DGN
 20-111-C-31-097.DGN
 20-111-C-31-098.DGN
 20-111-C-31-099.DGN
 20-111-C-31-100.DGN

GULF INTRACOSTAL WATERWAY
 CALOOCOCHEE RIVER
 SARASOTA COUNTY, FLORIDA
HYDROGRAPHIC EXAM SURVEY FY20
9-FOOT PROJECT
 STA. 171+00 CUT S-1 THRU STA. 14+00 CUT S-2
PLAN

Scale: AS SHOWN

Drawing no.
8

SHEET 08 OF 62



US Army Corps of Engineers
Jacksonville District
SAFETY ON THIS JOB
DEPENDS ON YOU

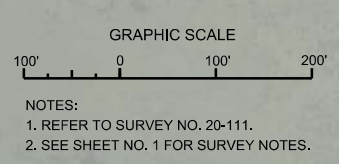
No.	Symbol	Zone

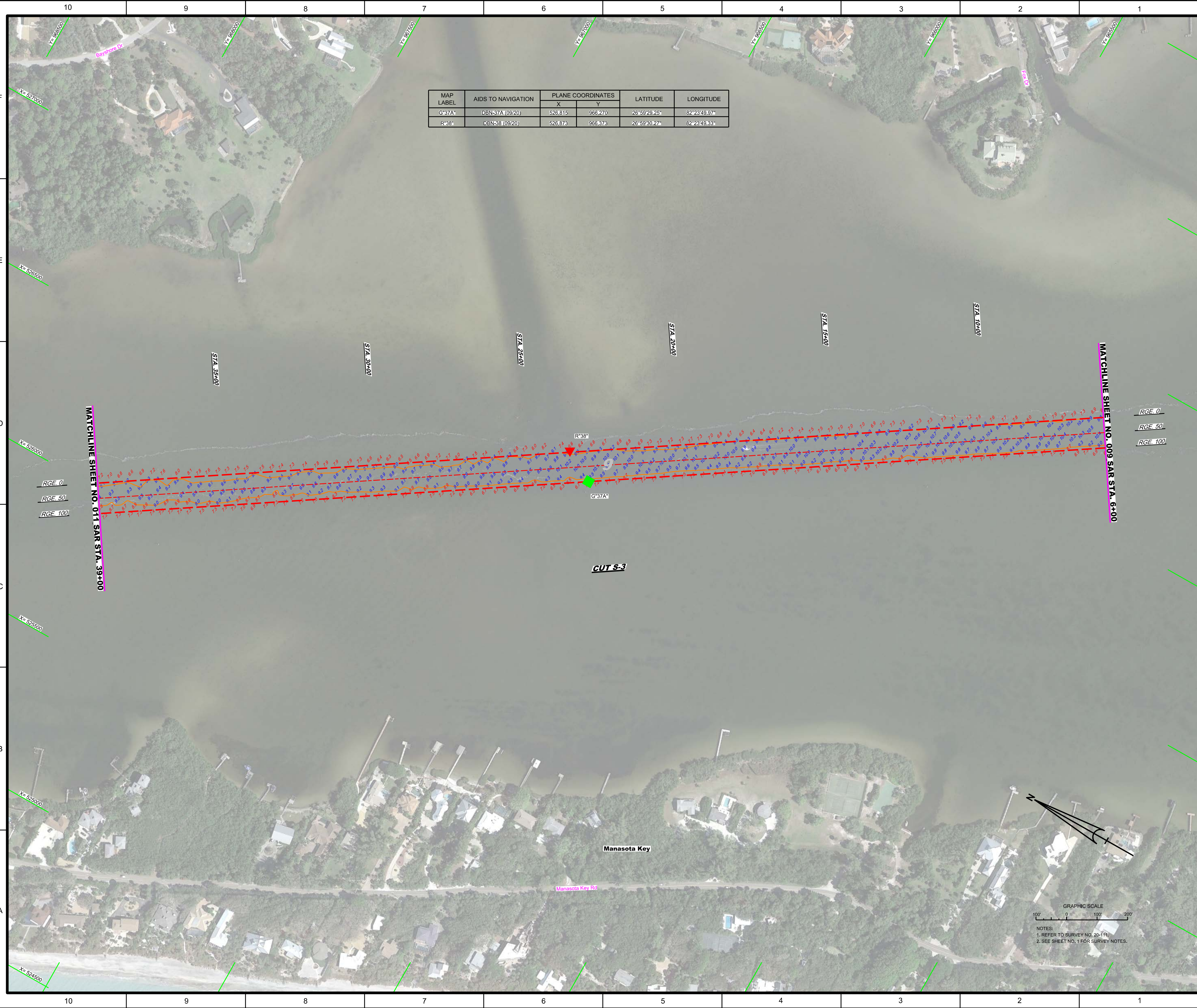
DEPARTMENT OF THE ARMY
JACKSONVILLE DISTRICT, CORPS OF ENGINEERS
JACKSONVILLE, FLORIDA

Designed by: WRM
 Drawn by: WRM
 Checked: WRM
 Date: SEP 2020
 File name: 20-111-HR002_SAR.DGN

GULF INTRACOSTAL WATERWAY RIVER
 SARASOTA COUNTY, FLORIDA
HYDROGRAPHIC EXAM SURVEY FY20
9-FOOT PROJECT
 STA. 14+00 CUT S-2 THRU STA. 6+00 CUT S-3
PLAN

MAP LABEL	AIDS TO NAVIGATION	PLANE COORDINATES		LATITUDE	LONGITUDE
		X	Y		
G*35	DBN-35 (09/20)	529.866	962.827	26°58'55.24"	82°23'21.68"
R*36	DBN-36 (09/20)	528.206	964.356	26°59'10.36"	82°23'34.49"
G*37	LT-37 (09/20)	528.055	964.360	26°59'10.37"	82°23'36.15"





MAP LABEL	AIDS TO NAVIGATION	PLANE COORDINATES		LATITUDE	LONGITUDE
		X	Y		
G*37A*	DBN-37A (09/20)	526,815	966,270	26°59'29.25"	82°23'49.97"
R*38*	DBN-38 (09/20)	526,873	966,373	26°59'30.27"	82°23'49.33"

US Army Corps of Engineers
Jacksonville District

SAFETY ON THIS JOB
DEPENDS ON YOU

DEPARTMENT OF THE ARMY
JACKSONVILLE DISTRICT, CORPS OF ENGINEERS
JACKSONVILLE, FLORIDA

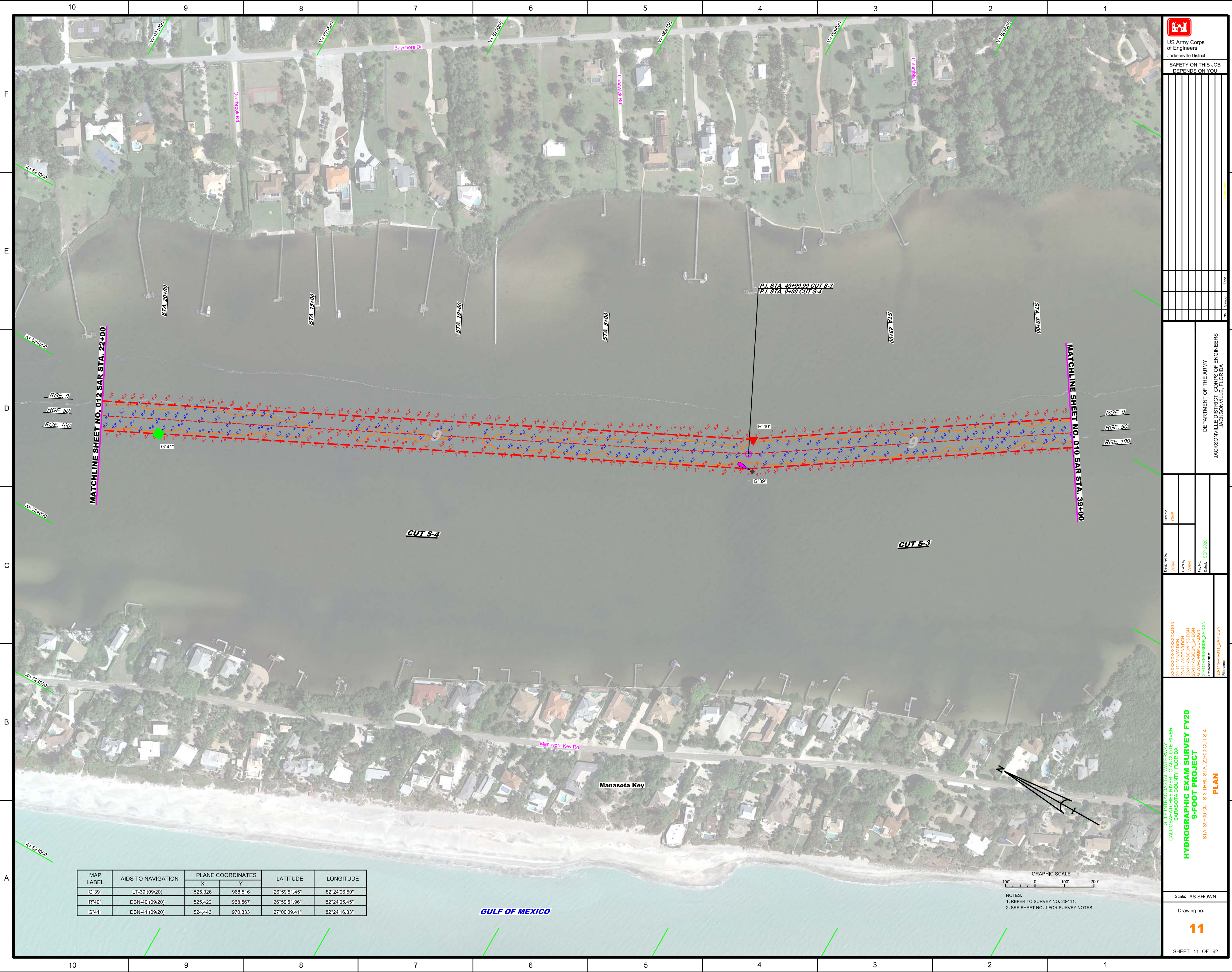
Call by: GMR
Designed by: WRM
Drawn by: WRM
File No.: 20-1114-CONV.DGN
Date: SEP 2020

XXXXXXXXXXXXXXXXXXXX.DGN
20-1114-MAIN.DGN
20-1114-CONV.DGN
20-1114-GWGT.DGN
20-1114-GS-BRKR_SALDGN
20-1114-H01(L)_SAR.DGN

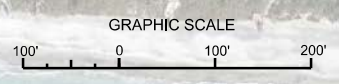
HYDROGRAPHIC EXAM SURVEY FY20
9-FOOT PROJECT
STA. 6+00 THRU STA. 39+00 CUT S-3
PLAN

Scale: AS SHOWN
Drawing no. **10**
SHEET 10 OF 62

NOTES:
1. REFER TO SURVEY NO. 20-1114.
2. SEE SHEET NO. 1 FOR SURVEY NOTES.



MAP LABEL	AIDS TO NAVIGATION	PLANE COORDINATES		LATITUDE	LONGITUDE
		X	Y		
G*39*	LT-39 (09/20)	525,326	968,516	26°59'51.45"	82°24'06.50"
R*40*	DBN-40 (09/20)	525,422	968,567	26°59'51.96"	82°24'05.45"
G*41*	DBN-41 (09/20)	524,443	970,333	27°00'09.41"	82°24'16.33"



NOTES:
 1. REFER TO SURVEY NO. 20-111.
 2. SEE SHEET NO. 1 FOR SURVEY NOTES.

US Army Corps of Engineers
 Jacksonville District

SAFETY ON THIS JOB
 DEPENDS ON YOU

DEPARTMENT OF THE ARMY
 JACKSONVILLE DISTRICT, CORPS OF ENGINEERS
 JACKSONVILLE, FLORIDA

Scale: AS SHOWN

Drawing no.
11

SHEET 11 OF 62

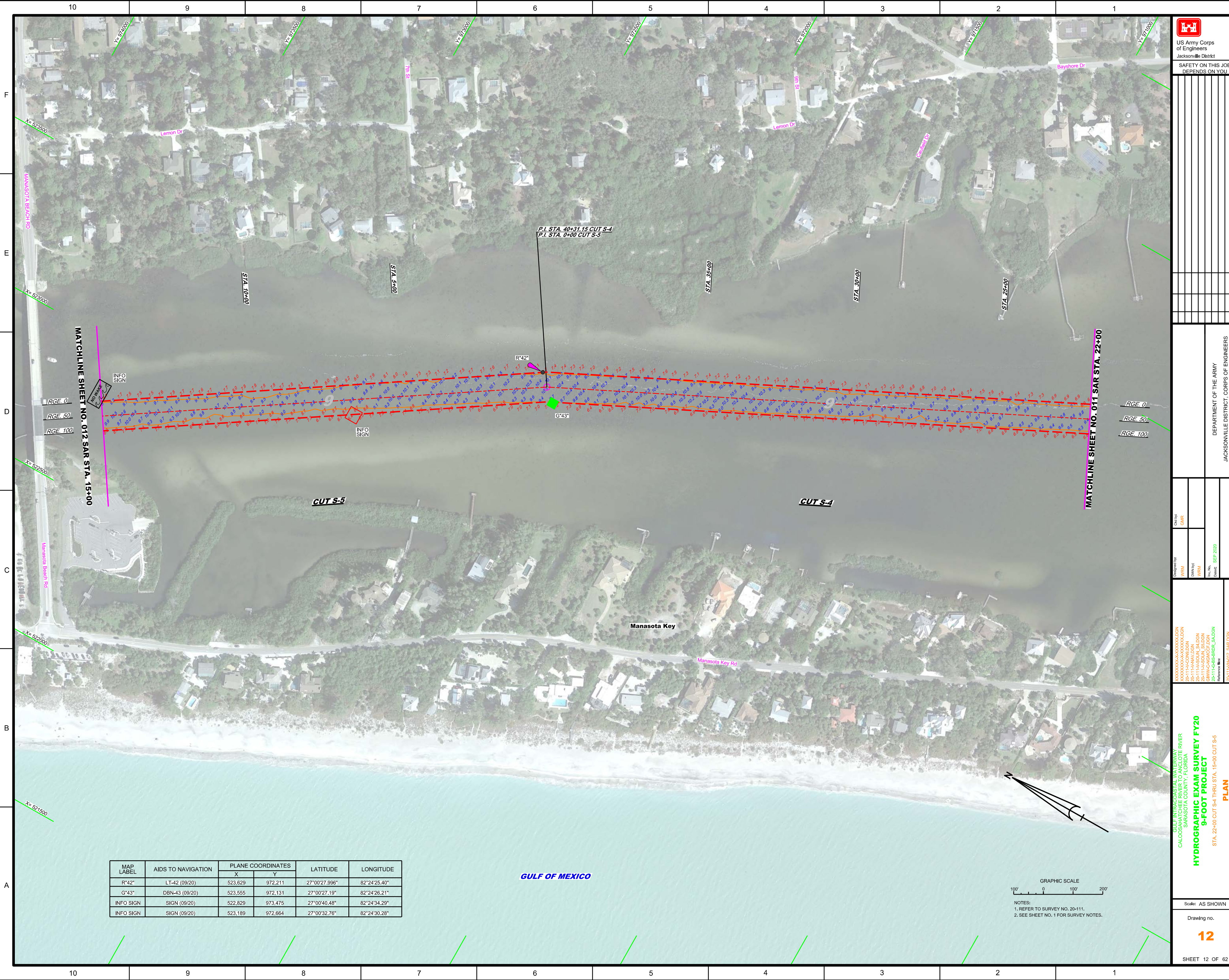
HYDROGRAPHIC EXAM SURVEY FY20
9-FOOT PROJECT
 PLAN


STA. 39+00 CUT S-3 THRU STA. 22+00 CUT S-4

XXXXXXXXXXXXXXXXXXXX.DGN
 20-111A-COON9.DGN
 20-111A-SOIA_S3.DGN
 20-111A-SOIA_S4.DGN
 20-111G-ES-RRR_S3.DGN
 20-111G-ES-RRR_S4.DGN
 20-111H-R1_L_SAR.DGN

Designed by: WRM
 DWN by: WRM
 File No: 20-111G-ES-RRR_S3.DGN
 Date: SEP 2020

Checked by: GMR




 US Army Corps of Engineers
 Jacksonville District
 SAFETY ON THIS JOB
 DEPENDS ON YOU

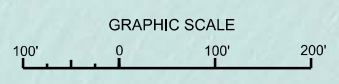
DEPARTMENT OF THE ARMY
 JACKSONVILLE DISTRICT, CORPS OF ENGINEERS
 JACKSONVILLE, FLORIDA

Call by: GMR
 Designed by: WRM
 Drawn by: WRM
 File No.: 20-111-9-BS-RRR_SALDGN
 Date: SEP 2020

GULF COASTAL WATERWAY
 CALOOCHEE RIVER
 SARASOTA COUNTY, FLORIDA
HYDROGRAPHIC EXAM SURVEY FY20
9-FOOT PROJECT
 STA. 22+00 CUT S-4 THRU STA. 15+00 CUT S-5
PLAN

Scale: AS SHOWN
 Drawing no.
12
 SHEET 12 OF 62

MAP LABEL	AIDS TO NAVIGATION	PLANE COORDINATES		LATITUDE	LONGITUDE
		X	Y		
R*42"	LT-42 (09/20)	523,629	972,211	27°00'27.996"	82°24'25.40"
G*43"	DBN-43 (09/20)	523,555	972,131	27°00'27.19"	82°24'26.21"
INFO SIGN	SIGN (09/20)	522,829	973,475	27°00'40.48"	82°24'34.29"
INFO SIGN	SIGN (09/20)	523,189	972,664	27°00'32.76"	82°24'30.28"

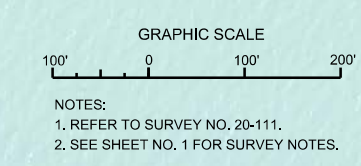


NOTES:
 1. REFER TO SURVEY NO. 20-111.
 2. SEE SHEET NO. 1 FOR SURVEY NOTES.

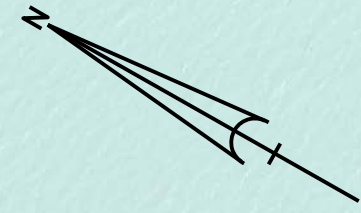
GULF OF MEXICO

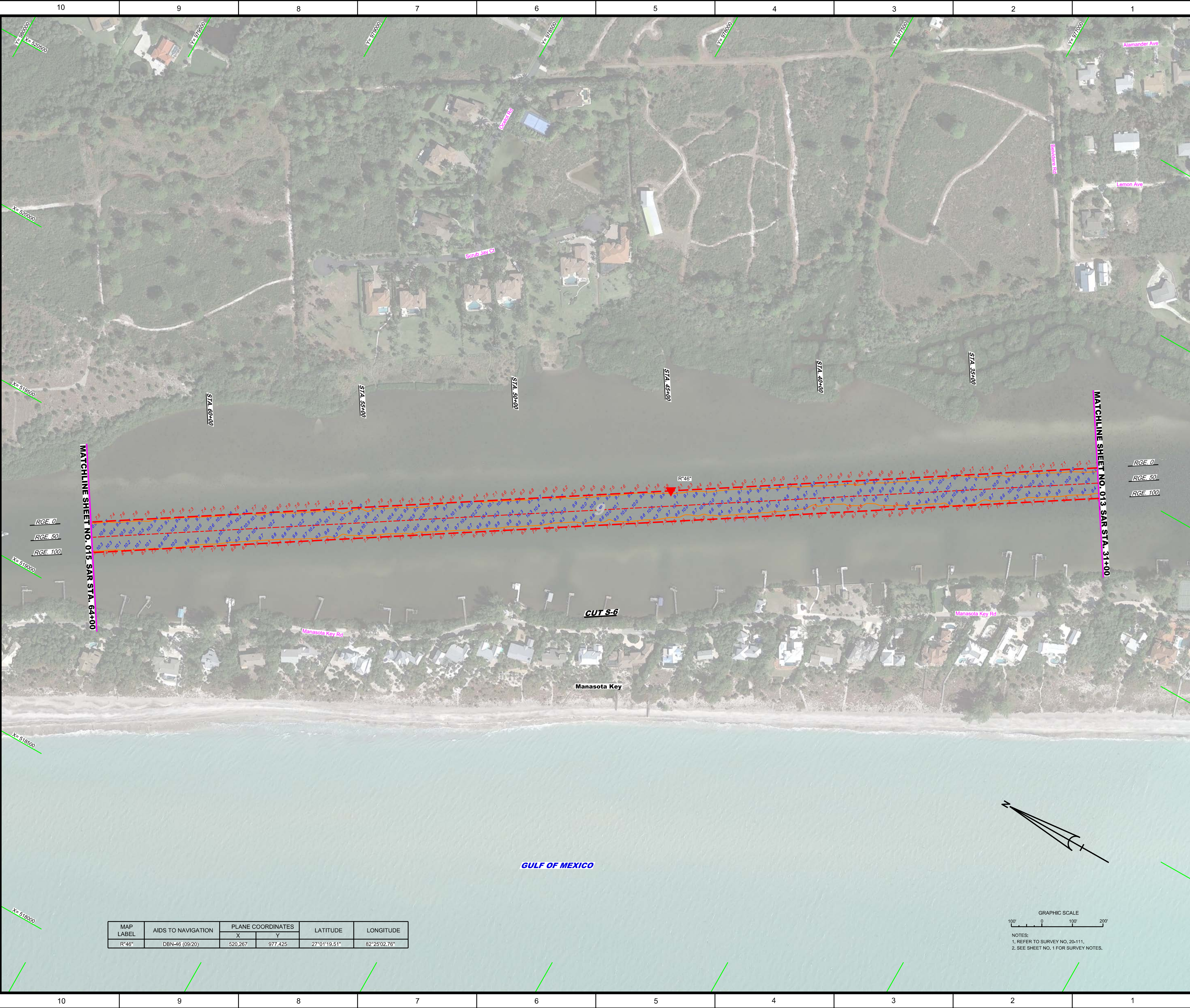



MAP LABEL	AIDS TO NAVIGATION	PLANE COORDINATES		LATITUDE	LONGITUDE
		X	Y		
G*45°	DBN-45 (09/20)	521,443	975,397	27°00'58.47"	82°24'49.69"
INFO SIGN	SIGN (09/20)	522,6616	973,904	27°00'43.73"	82°24'36.66"
INFO SIGN	SIGN (09/20)	522,490	973,751	27°00'43.20"	82°24'38.05"
INFO SIGN	SIGN (09/20)	522,677	973,428	27°00'40.01"	82°24'35.97"
INFO SIGN	SIGN (09/20)	522,829	973,475	27°00'40.48"	82°24'34.29"



GULF OF MEXICO






 US Army Corps of Engineers
 Jacksonville District
 SAFETY ON THIS JOB DEPENDS ON YOU

DEPARTMENT OF THE ARMY		
JACKSONVILLE DISTRICT, CORPS OF ENGINEERS		
JACKSONVILLE, FLORIDA		

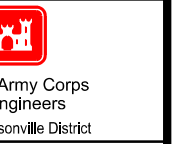
Drawn by:	WRM
Checked by:	GHR
Designed by:	WRM
Date:	SEP 2020

GULF INTRACOSTAL WATERWAY RIVER
 CALOOCHEE RIVER
 SARASOTA COUNTY, FLORIDA
HYDROGRAPHIC EXAM SURVEY FY20
9-FOOT PROJECT
 STA. 31+00 THRU STA. 84+00 CUT S-6
PLAN

MAP LABEL	AIDS TO NAVIGATION	PLANE COORDINATES		LATITUDE	LONGITUDE
R"46"	DBN-46 (09/20)	X	Y	27°01'19.51"	82°25'02.76"
		520,267	977,425		

Scale: AS SHOWN
 Drawing no. **14**
 SHEET 14 OF 62

NOTES:
 1. REFER TO SURVEY NO. 20-111.
 2. SEE SHEET NO. 1 FOR SURVEY NOTES.



US Army Corps
of Engineers

Jacksonville District

SAFETY ON THIS JOB
DEPENDS ON YOU

REV.	DATE	DESCRIPTION

DEPARTMENT OF THE ARMY
JACKSONVILLE DISTRICT, CORPS OF ENGINEERS
JACKSONVILLE, FLORIDA

Designed by: WRM
Drawn by: WRM
Checked by: WRM
Date: SEP 2020

XXXXXXXXXXXXXXXXXXXX.DGN
XXXXXXXXXXXXXXXXXXXX.DGN
XXXXXXXXXXXXXXXXXXXX.DGN
20-1114-SOLA_S6.DGN
20-1114-SOLA_S7.DGN
20-1114-SOLA_S8.DGN
20-1114-SOLA_S9.DGN
20-1114-SOLA_S10.DGN
20-1114-SOLA_S11.DGN
20-1114-SOLA_S12.DGN
20-1114-SOLA_S13.DGN
20-1114-SOLA_S14.DGN
20-1114-SOLA_S15.DGN
20-1114-SOLA_S16.DGN
20-1114-SOLA_S17.DGN
20-1114-SOLA_S18.DGN
20-1114-SOLA_S19.DGN
20-1114-SOLA_S20.DGN
20-1114-SOLA_S21.DGN
20-1114-SOLA_S22.DGN
20-1114-SOLA_S23.DGN
20-1114-SOLA_S24.DGN
20-1114-SOLA_S25.DGN
20-1114-SOLA_S26.DGN
20-1114-SOLA_S27.DGN
20-1114-SOLA_S28.DGN
20-1114-SOLA_S29.DGN
20-1114-SOLA_S30.DGN
20-1114-SOLA_S31.DGN
20-1114-SOLA_S32.DGN
20-1114-SOLA_S33.DGN
20-1114-SOLA_S34.DGN
20-1114-SOLA_S35.DGN
20-1114-SOLA_S36.DGN
20-1114-SOLA_S37.DGN
20-1114-SOLA_S38.DGN
20-1114-SOLA_S39.DGN
20-1114-SOLA_S40.DGN

GULF INTERCOASTAL WATERWAY AT THE RIVER
SARASOTA COUNTY, FLORIDA
HYDROGRAPHIC EXAM SURVEY FY20
9-FOOT PROJECT
STA. 64+00 CUT S-6 THRU STA. 30+00 CUT S-7
PLAN

Scale: AS SHOWN

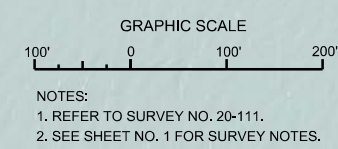
Drawing no.

15

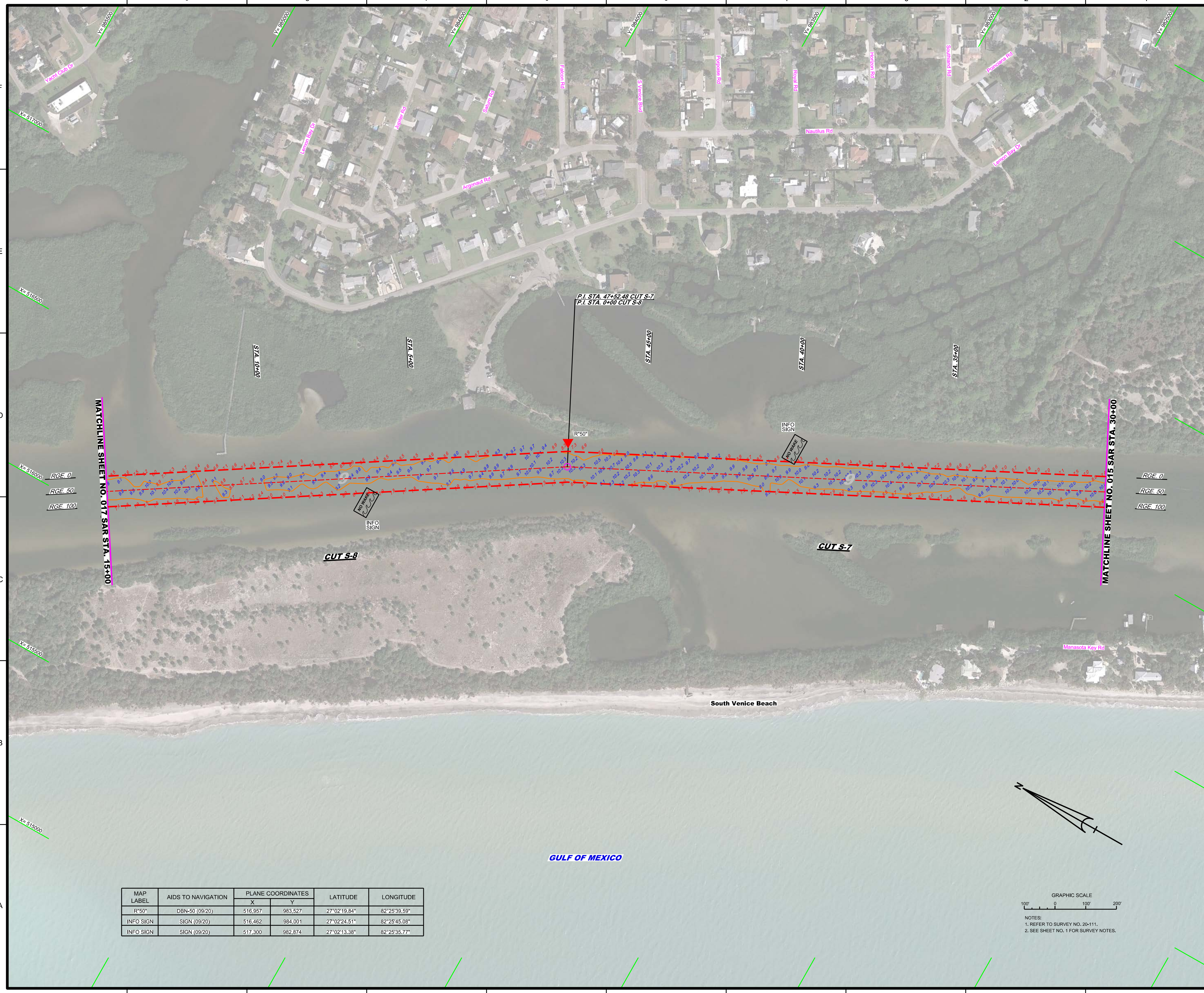
SHEET 15 OF 62



MAP LABEL	AIDS TO NAVIGATION	PLANE COORDINATES		LATITUDE	LONGITUDE
		X	Y		
G*47	LT-47 (09/20)	518,962	979,228	27°01'37.32"	82°25'17.25"
R*48	DBN-48 (09/20)	519,084	979,296	27°01'38.00"	82°25'15.92"
G*49	DBN-49 (09/20)	518,100	980,915	27°01'53.99"	82°25'26.86"



NOTES:
1. REFER TO SURVEY NO. 20-111.
2. SEE SHEET NO. 1 FOR SURVEY NOTES.



P.I. STA. 47+52.48 CUT S-7
 P.I. STA. 0+00 CUT S-8

R"50"

INFO SIGN

INFO SIGN

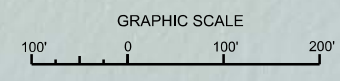
CUT S-8

CUT S-7

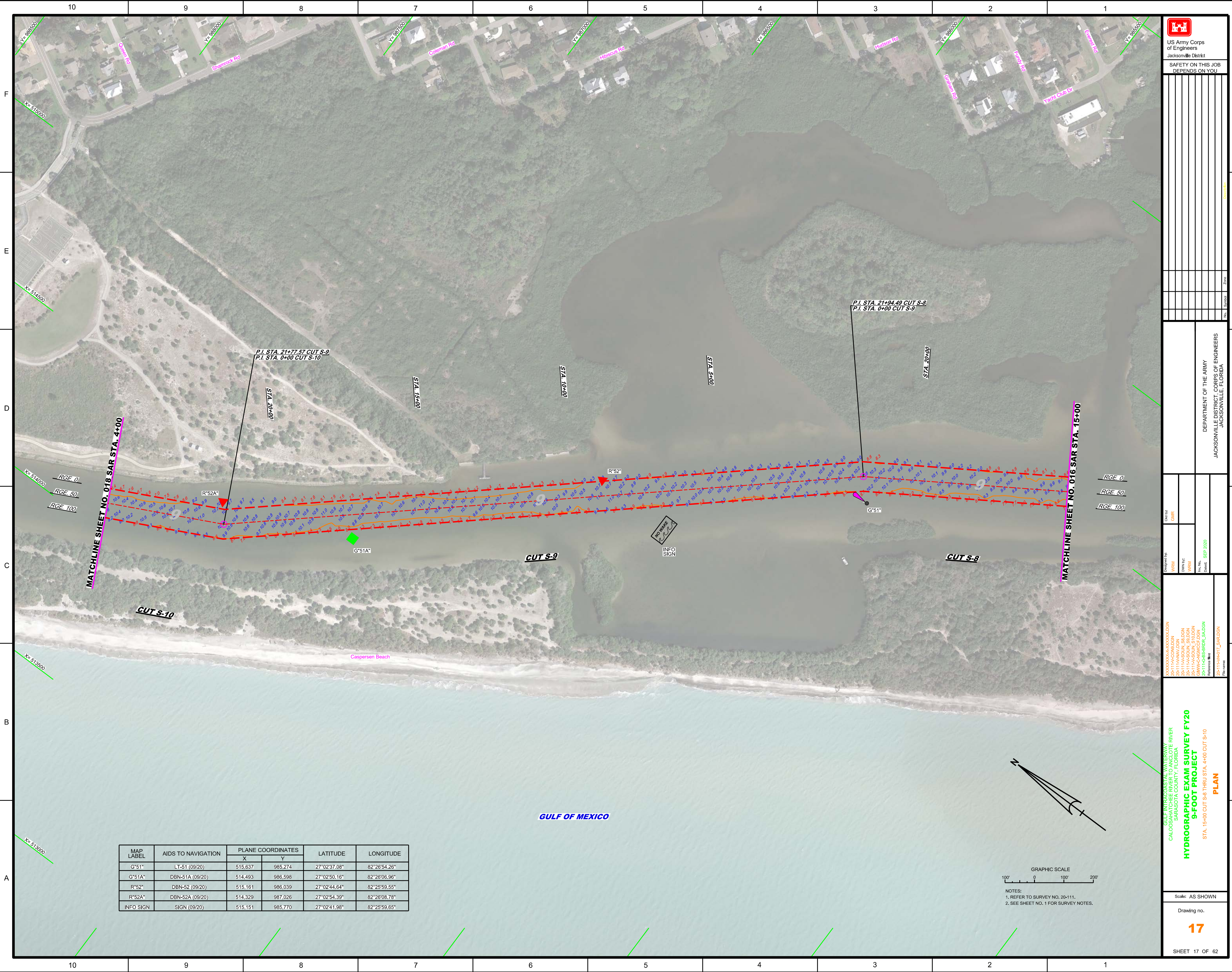
South Venice Beach


GULF OF MEXICO

MAP LABEL	AIDS TO NAVIGATION	PLANE COORDINATES		LATITUDE	LONGITUDE
		X	Y		
R"50"	DBN-50 (09/20)	516,957	983,527	27°02'19.84"	82°25'39.59"
INFO SIGN	SIGN (09/20)	516,462	984,001	27°02'24.51"	82°25'45.08"
INFO SIGN	SIGN (09/20)	517,300	982,874	27°02'13.38"	82°25'35.77"



NOTES:
 1. REFER TO SURVEY NO. 20-111.
 2. SEE SHEET NO. 1 FOR SURVEY NOTES.





 US Army Corps of Engineers
 Jacksonville District
 SAFETY ON THIS JOB
 DEPENDS ON YOU

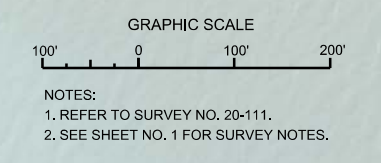
Project Name	DEPARTMENT OF THE ARMY JACKSONVILLE DISTRICT, CORPS OF ENGINEERS JACKSONVILLE, FLORIDA
Client	GHR
Designated By	WRM
Drawn By	WRM
Checked By	WRM
Date	SEP 2020

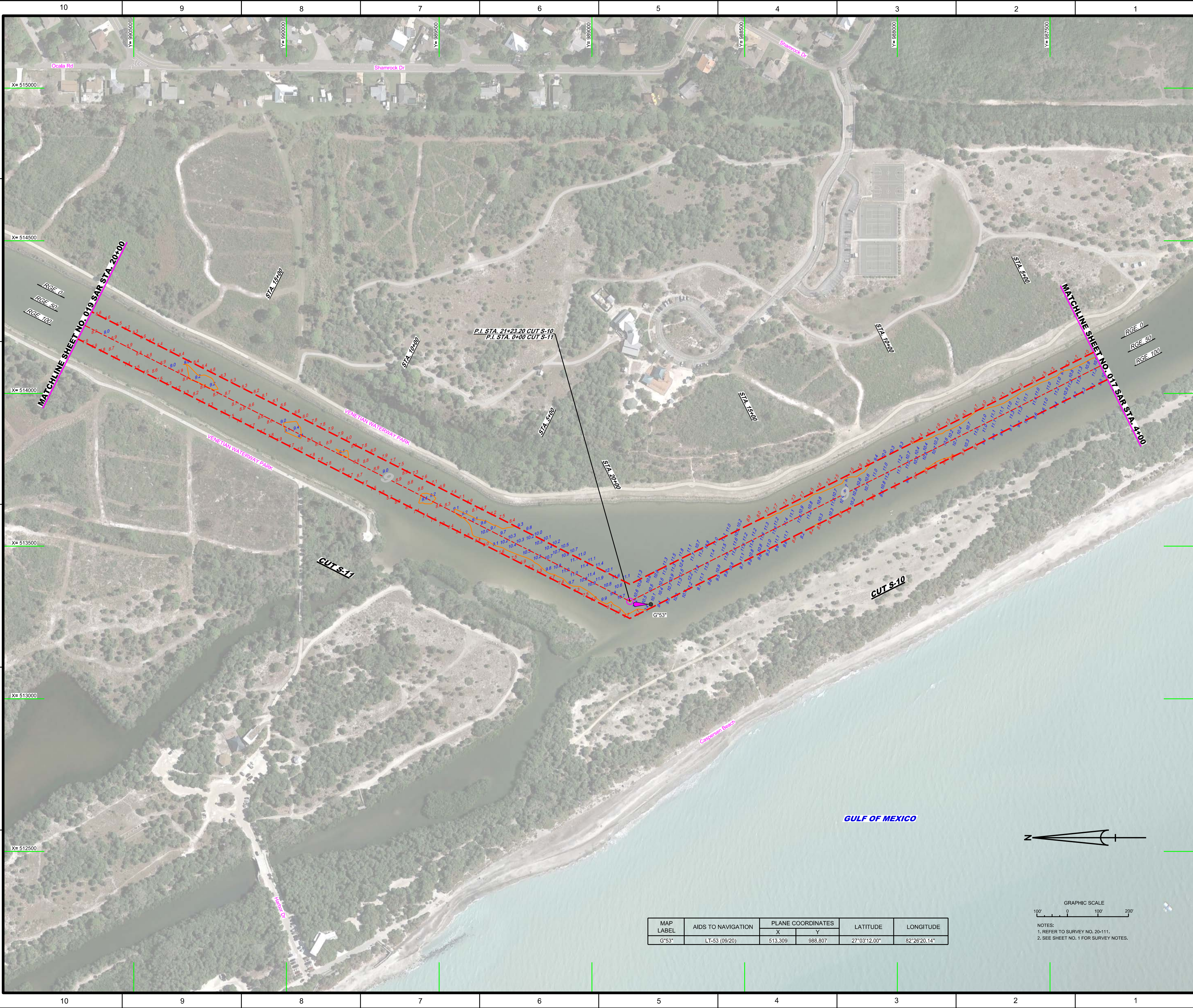
File Name	20-1114-001_SAR.DGN
Project Path	\\XXXXXXXXXXXXXXXXXXXX\XXXXXXXXXXXX\20-1114-001_SAR.DGN
Project Path	\\XXXXXXXXXXXX\20-1114-001_SAR.DGN
Project Path	\\XXXXXXXXXXXX\20-1114-001_SAR.DGN
Project Path	\\XXXXXXXXXXXX\20-1114-001_SAR.DGN
Project Path	\\XXXXXXXXXXXX\20-1114-001_SAR.DGN
Project Path	\\XXXXXXXXXXXX\20-1114-001_SAR.DGN
Project Path	\\XXXXXXXXXXXX\20-1114-001_SAR.DGN
Project Path	\\XXXXXXXXXXXX\20-1114-001_SAR.DGN
Project Path	\\XXXXXXXXXXXX\20-1114-001_SAR.DGN

GULF INTRACOASTAL WATERWAY RIVER
 CALOOCHEE WATERSHED
 SARASOTA COUNTY, FLORIDA
HYDROGRAPHIC EXAM SURVEY FY20
9-FOOT PROJECT
 STA. 15+00 CUT S-8 THRU STA. 4+00 CUT S-10
PLAN

Scale: AS SHOWN
 Drawing no.
17
 SHEET 17 OF 62

MAP LABEL	AIDS TO NAVIGATION	PLANE COORDINATES		LATITUDE	LONGITUDE
		X	Y		
G*51*	LT-51 (09/20)	515,837	985,274	27°02'37.08"	82°26'54.26"
G*51A*	DBN-51A (09/20)	514,493	986,598	27°02'50.16"	82°26'06.96"
R*52*	DBN-52 (09/20)	515,161	986,039	27°02'44.64"	82°25'59.55"
R*52A*	DBN-52A (09/20)	514,329	987,026	27°02'54.39"	82°26'08.78"
INFO SIGN	SIGN (09/20)	515,151	985,770	27°02'41.98"	82°25'59.65"






 US Army Corps of Engineers
 Jacksonville District
 SAFETY ON THIS JOB
 DEPENDS ON YOU

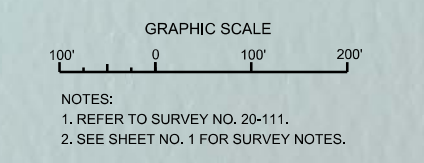
DEPARTMENT OF THE ARMY
 JACKSONVILLE DISTRICT, CORPS OF ENGINEERS
 JACKSONVILLE, FLORIDA

Call by: GJR
 Designed by: WRM
 Drawn by: WRM
 File No.: 20-1116-BS-RRR_SADGN
 Date: SEP 2020

GULF INTRACOSTAL WATERWAY RIVER
 CALOOGUE CREEK
 SARASOTA COUNTY, FLORIDA
HYDROGRAPHIC EXAM SURVEY FY20
9-FOOT PROJECT
 STA. 4+00 CUT S-10 THRU STA. 20+00 CUT S-11
PLAN

Scale: AS SHOWN
 Drawing no.
18
 SHEET 18 OF 62

MAP LABEL	AIDS TO NAVIGATION	PLANE COORDINATES		LATITUDE	LONGITUDE
		X	Y		
G°53"	LT-53 (09/20)	513.309	988.807	27°03'12.00"	82°28'20.14"



NOTES:
 1. REFER TO SURVEY NO. 20-111.
 2. SEE SHEET NO. 1 FOR SURVEY NOTES.

